



Suvari

LANCERO

INERTIA SEMI-AUTO SHTOGUN

**INSTRUCTION
&
MAINTENANCE MANUAL**



GUN SAFETY RULES

Observe these rules of safe gun handling.

1. Always keep the muzzle pointed in a safe direction. Watch the muzzle at all times: never point a gun, accidentally or intentionally, at any person or anything you do not intend to shoot. Identify the target before shooting; do not shoot at sounds.
2. Always treat any gun as if it is loaded - it may be!
3. Keep your finger off the trigger while operating the action and at all other times until you are ready to shoot.
4. Keep the safety "on" or in the "safe" position at all times until you are ready to fire the gun. Move to shoot. Up to the previous line after the word intend.
to shoot.
Do not rely on your gun's safety, the safety on any gun is a mechanical device and is not intended as a substitute for common sense or safe gun handling.
5. Learn how your gun functions and handles. If you do not thoroughly understand the proper use and care of your gun, seek the advice of someone who is knowledgeable.
6. Do not alter or modify any parts of a firearm.
7. Store guns unloaded, separate from any ammunition, and where children cannot get to them.
8. Be sure the barrel is clear of any obstructions before loading. Make it a habit to check the barrel every time before loading.
9. Be sure you have and use the proper ammunition. A 12 gauge shell will enter a 12 gauge chamber far enough so that a 12 gauge shell can be loaded behind it. Also, a 3 inch shell may fit into a 2 3/4 inch chamber, but the crimp at the mouth of the shell will unfold into the forcing cone. If either of these things occur and you fire the gun, the gun will explode, damaging the gun and possibly causing serious injury or death to you and those around you.
10. Wear protective shooting glasses and adequate ear protection when shooting.
11. Never climb or jump over anything, such as a tree, fence, or ditch, with a loaded gun. Open the barrel, remove the shells, and hand the gun to a friend.



or place it on the ground on the other side of the obstacle before crossing it yourself. Do not lean a gun against a tree or other object; it could fall and possibly discharge.

12. Do not shoot at a hard surface or at water. Bullet and shot can ricochet or bounce off and travel in unpredictable directions with great velocity.

13. Never transport a loaded gun. Do not place a loaded gun into a vehicle. The gun should be unloaded and placed into a case when not in use.

14. Never drink alcoholic beverages before or during shooting.

INTRODUCTION TO SUVARI

For many of years, Suvvari has been associated with the gun industry. After the word with modern technology and you have a product of true value and affordable quality. You have Suvvari

We at Suvvari thank you for the privilege of delivering a product to you that will provide you with years of pleasurable use. Happy shotgunning.

OPERATING SYSTEM

The **Suvvari Lancero** operation is based on the basic principle of inertia utilizing the kinetic energy created by the projection of the fired cartridge within an unvented barrel. The system requires no outlet for gas or barrel recoil, but operates by means of a spring that is freely interposed between the bolt head and the bolt.

SAFETY SWITCH OR BUTTON

The safety is designed to stop the trigger mechanism.

DON'T RELY ON YOUR GUN'S SAFETY. TREAT EVERY GUN AS IF IT WERE LOADED AND READY TO FIRE. The safety on any gun is a mechanical device, and it is not intended as a substitute for common sense or safe gun handling. Always keep the muzzle pointed in a safe direction.



ASSEMBLY

Mounting the fore-end and the barrel, to the receiver. Make sure the barrel is clean and free off heavy lubrication. Remove the fore-end by unscrewing the fore-end nut. Slide the fore-end off the magazine tube.(Fig.2.)

Assemble the fore-end on to the barrel's underside by inserting front part of the fore-end to the barrel's lug(Fig.3.)Now the barrel is ready to assemble to the receiver.

While the barrel is ready to assemble, slide the fore-end into the magazine tube and fit it properly to the receiver(Fig.4). Make sure that the fore-end is fitted with the fore-end latch correctly. Screw the fore-end nut on to the front of the magazine tube, finger tight. Close the bolt by pressing the carrier latch button.



Fig.1



Fig.2



Fig.3



Fig.4



MANUAL TRIGGER SAFETY

Before loading the gun, manual trigger safety is on. (Fig.5) To activate the manual trigger safety, press the manual safety button on the side of the trigger guard from the left side of the gun, to the right. When the trigger safety is 'on', the black button will protrude from the left side of the trigger guard, and the red band around the button will be visible.

The manual safety trigger is related only to lock the trigger. It's not suitable for safe gun handling.

LOADING

Put the manual safety 'on' (Fig.5). Pull the trigger guard latch button and make sure there is no shell dropping on the carrier (Fig.6). Push the carrier latch button and release the bolt forward as into close position. (Fig.7) Load cartridges by sliding them forward into the magazine tube, thanks to our easy loading feature depressing the cartridge carrier as you do so (Fig.8)

After loading the magazine tube pull the trigger guard latch button, the cartridge will drop on the carrier. In order to move a cartridge from carrier to the chamber, pull the bolt handle fully to the back, and release it. (Fig.9) The magazine tube holds 2 cartridges when the magazine plug is installed. The magazine tube holds five pieces 3" magnum or four pieces when the plug has been removed. To load an additional cartridge, load one cartridge to the chamber, and then load other cartridges to the magazine tube, and pull to trigger guard latch button (Fig.9) to drop the cartridge from magazine tube to the carrier. When you are ready to fire, put the manual trigger safety in to the 'off' position. The gun now is ready to fire.



Fig.5



Fig.6



Fig.7



Fig.8



Fig.9



UNLOADING

Fired cartridges will be ejected automatically. To unload the unfired cartridges from the gun, first of all be sure that the safety button is in the ‘on’ position.(Fig.10) Never permit your finger or another object to come in contact with the trigger while unloading.

Pull the bolt handle to rear to eject any cartridge in the chamber. If there is a cartridge in the chamber and a cartridge on the carrier, this will also load the cartridge from the carrier, pull and release the bolt handle again.

If cartridge remains in the magazine tube, pull the trigger guard latch button to place the cartridge onto the carrier. Pull and release the bolt handle again to load that cartridge to the chamber, than pull it again to eject the cartridge from the chamber. Continue this operation until all the cartridges have been ejected.

Always double check to make sure that the firearms are completely unloaded when you are not shooting.

DISASSEMBLY

Unload the gun. Put the manual safety ‘on’. Pull the bolt handle fully to the back and lock the bolt backwards as in bolt open position. Unscrew the fore-end nut and remove it (Fig.11).Slide the fore-end and barrel toward the muzzle and remove it



Fig.10



Fig.11



REMOVING AND DISASSEMBLING THE BOLT GROUP

Removing

After the barrel and fore-end are completely removed from the receiver. Push the carrier latch button by holding the bolt handle, and release it to the forward position. Take out the bolt handle by pulling it out (Fig.12). And pull the bolt assembly out of the receiver, sliding it along its guides (Fig.13).

Disassembling

While holding the firing pin and firing pin spring in place, remove the firing pin retaining pin from the bolt assembly (Fig.14).

Remove the firing pin and firing pin spring from the bolt (Fig.15). Remove the locking head pin from the locking head. Pull the locking head from the bolt body. (Fig.16) Remove the inertia spring from its seat in the bolt and drop it into your palm (Fig.17).



Fig.12



Fig.13



Fig.14



Fig.15



Fig.16



Fig.17



REMOVING AND REINSTALLING THE TRIGGER GROUP

Removing

Make sure that you removed the bolt group from the receiver. In order to remove the trigger group, push the receiver pin through the receiver and remove it by using an appropriate punch(Fig.18).While pushing the carrier latch button, push the trigger group forward and remove it(Fig19).

Installing

After cleaning and lubricating the trigger group, it is reinstalled by pressing the carrier latch button while pushing the trigger group rearward. Align the hole in the trigger group with the hole for the receiver pin, and reinstall the receiver pin.



Fig.18



Fig.19



ASSEMBLING AND INSTALLING THE BOLT GROUP

Assembling

Insert the inertia spring in, it seats in the bolt (Fig20). Insert the locking head into the bolt body(Fig21). Insert the locking head pin in its hole onto the locking head's stem(Fig.22). Make sure than the reference line on the top of the locking head pin is visible and aligned with bolt's centerline. Insert the firing pin and the firing pin spring inside the bolt(Fig.23).

Insert the firing pin retaining pin in its seat, in order to block the firing pin move out(Fig.24).

Installing

Insert the bolt assembly inside the receiver, by sliding it along its guides. Make sure that bolt link fit to the recoil spring cap.



Fig.20



Fig.21



Fig.22



Fig.23



Fig.24



REMOVING AND REINSTALLING THE PRIMO CHOKE TUBES

Unload the gun and make sure that the safety is “on” position. Remove your choke by inserting the choke key, and turning it counter clockwise. After cleaning and lubricating, a choke tube may be reinstalled by starting the threads by hand, than tightening the choke tube with choke key(Fig25). Consult the choke value chart for suggested values.

REMOVING THE MAGAZINE PLUG

Since the hunting regulations in some countries and areas limit the number of cartridges allowed in the magazine, this shotgun comes with a limiter plug installed in magazine tube that reduces the capacity of to magazine tube to two cartridges. To remove this plug, follow the direction below. Unscrew and remove the fore-end nut. Remove the magazine plug from the end of the magazine tube(Fig.26). Replace the fore-end nut by screwing it into place.

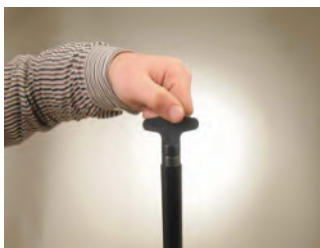


Fig.25



Fig.26



CHANGING THE DROP (IF YOUR SHOTGUN INCLUDES)

In order to accommodate all shooters' needs; however, a Drop Change Kit is included as standard.

This kit provides drops of 50,60, and 65 mm and consists of tree drop adjustment shims. Each shim is marked with its corresponding drop measurement.

To accommodate left handed shooters, we have also included a left cast shim marked.

To change the drop, follow these instructions

- Make sure the gun is unloaded as previously described.

- Using an ordinary Phillips or crosshead screwdriver, unscrew the butt plate screws (H) to remove the butt plate(G)

- Remove the stock-remove the retaining nut (D) using a 13 mm socket or hex spanner remove the washer (E) and take off the stock. Now the stock may be removed.

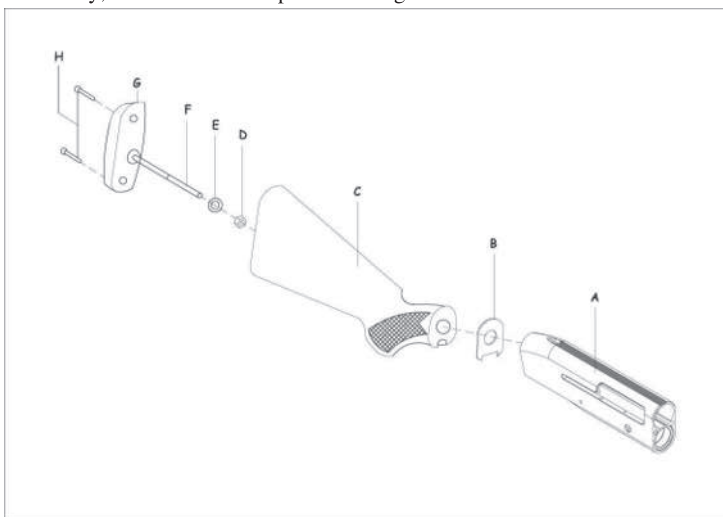
- Insert the shim (B) corresponding to the desired drop through the recoil spring tube until the shim is flush with the receiver.

- Install the stock and insert the retaining nut(D) with its elastic washer (E)

- Tighten the stock retaining nut (D) using the socket or hex spanner.

- Install the butt plate(G) and insert the screws(H).

Warning: After firing a few rounds, check again that the stock is well tightened. If necessary, remove the recoil pad and re-tighten the stock nut.





WARNING

- Never shoot steel shot with a full or improved modified choke. Use only modified, improved cylinder or cylinder chokes (marked tree, four, five, cuts respectively).
- Never use cartridges with a case longer than the chamber, as this would have serious consequences for both the gun and the shooter.
- Never shoot slugs with a full choke, use only the most open choke which is marked with five cuts.
- Do not use 3 1/2'' cartridges (Supermagnums) in this shotgun.
- Never shoot without the choke tube fitted in the barrel

MAINTENANCE

Proper maintenance is one of the most important facet in assuring the level best performance of the gun as well as the highest level of safety to the scooter.

- * Before using the shotgun, make sure that barrel is clean and free of any grease or obstruction.
- * After each shooting session, dismantle the barrel, the choke tube and the bolt mechanism for cleaning and lubricating.
- * If the gun is used on a wet day, be sure to dry the gun and the wooden parts in a ventilated area.
- * Do not store the gun in a gun case or gun slip if not perfectly dry.
- * Storage of the gun in a plastic or synthetic case or slip for a long time is not suitable.

SPARE PARTS LIST

To order spare parts you must specify the model, the gauge and the serial number of your shotgun as well as the reference number of the spare parts found in the following tables.



WHAT'S SUVARI CHOKE?

The purpose of multi choke is to make barrel's tip narrowed down to shoot for and more collectively or to enlarge barrel's tip to shoot more wider pattern for small shots.

CHOKE TYPE AND AREAS USED FOR Suvari Lancero SHOTGUN

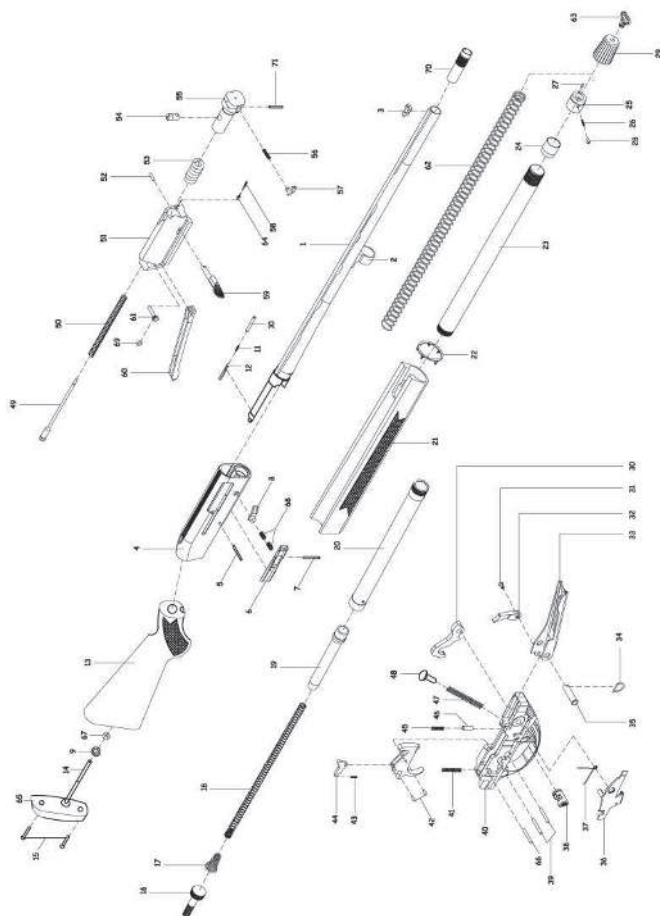
	CHOKE TYPE	SYMBOL	GAME	PELLET SIZE	USEFUL SHOOTING DISTANCE
1	* FULL		Goose, Duck, Wood Grouse For long range hunting with lead shot and tight groups.	1-2-3	50-56 meters
2	** IMPROVED MODIFIED		Duck, Pheasant, Wood Grouse, Rabbit.	4-5-6	41-44 meters
3	*** MODIFIED		Partridge, Pheasant, Quail, Pigeons, Woodcock. For long range hunting with lead shot and tight groups.	5-6-7-8	31-41 meters
4	**** IMPROVED CYLINDER		Quail, Dove and target shooting For shooter distance more open shooting.	7-8-9-10-11-12	30-35 meters
5	***** SKEET		For sporting clay and skeet shooting. Short distances more open shooting.	7-8-9-10-11-12	20-30 meters

WARNING:
Do not use choke values 1,2 or 3 with slugs,
single projectiles.
Do not use choke value 1 or 2 with steel shot.

WARNING: Never shoot steel shot with a full or improved modified choke, use only modified, improved cylinder or skeet chokes (marked three, four, five cuts respectively). Do not use chokes full improved modified and (marked one, two, three cuts) with slugs, single bullets or single projectiles. Never use cartridge with a case longer than the chamber, as this would have serious consequences for bolt the gun and the shooter. Do not use 3 1/2" cartridges (Super magnum) in this shotgun. Never shot without the choke tube fitted on the barrel.



Suvari





GENERAL ASSEMBLY

1 BARREL	25 MAGAZINE FOLLOWER (long)	49 FIRING PIN
2 BARREL RING	26 MAGAZINE FOLLOWER SIDE PIN SPRING	50 FIRING PIN SPRING
3 FRONT SIGHT	27 FOREND LOCK	51 BOLT
4 RECEIVER	28 MAGAZINE FOLLOWER SIDE PIN	52 BOLT HANDLE PIN
5 RECEIVER PIN	29 MAGAZIN CAP	53 BOLT INERTIA SPRING
6 CARRIER LATCH	30 HAMMER	54 LOCKING HEAD PIN
7 CARRIER LATCH PIN	31 BREECH BOLT LATCH PIN	55 LOCKING HEAD
8 CARRIER LATCH PLATE	32 BREECH BOLT LATCH	56 EXTRACTOR SPRING
9 RECOIL PAD SCREW WASHER	33 CARRIER	57 EXTRACTOR
10 CARTRIDGE EJECTOR	34 HAMMER BUSH RING	58 BOLT HANDLE RETAINING SPRING
11 EJECTOR PIN SPRING	35 HAMMER BUSH	59 BOLT HANDLE
12 EJECTOR PIN	36 CARTRIDGE DROP LEVER	60 BOLT LINK
13 STOCK	37 CARTRIDGE DROP LEVER SPRING	61 BOLT LINK PIN
14 STOCK BOLT	38 MANUAL SAFETY BUTTON	62 MAGAZINE SPRING
15 STOCK/RECOIL PAD SCREWS	39 TRIGGER PINS	63 SLING SWIVEL
16 STOCK RETAINING NUT SCREW	40 TRIGGER AGUARD	64 BOLT HANDLE PIN
17 REBOUNDING RECOIL SPRING	41 TRIGGER SPRING	65 BUTT PAD
18 STOCK TUBE SPRING	42 DISCONNECTOR PIN	66 TRIGGER SPRING PIN
19 RECOIL SPRING PLUNGER	43 DISCONNECTOR SPRING	67 STOCK RETAINING NUT
20 STOCK TUBE	44 DISCONNECTOR	68 CARRIER LATCH PLATE PIN
21 FOREND	45 MANUAL SAFETY SPRING	69 FIRING PIN O-RING
22 FOREND PROTECTION INSERT	46 MANUAL SAFETY SPRING PIN	70 PRIMO MOBILE CHOKE
23 MAGAZINE TUBE	47 HAMMER SPRING	71 EXTRACTOR PIN
24 MAGAZINE FOLLOWER (short)	48 HAMMER SPRING TOP PIN	



Suvari

www.suvariarms.com

Uzumlu Mahallesi, Beysehir, Konya, TURKEY